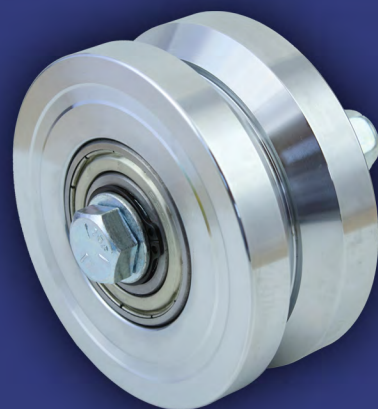
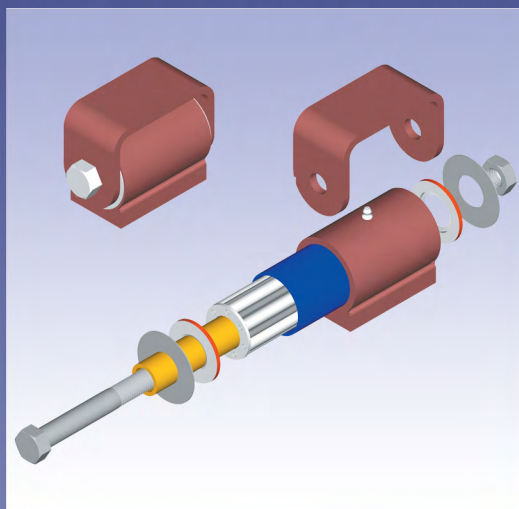




2015 CATALOG

It's What's Inside That Makes the Difference



www.allgatehardware.com

OUR Hinge. THEIR Gate. YOUR Reputation.

More and more installers are using Guardian Hinges for their gate systems, because they know a gate's performance is only as good as the hinge it rides on. Guardian Hinges are engineered to bear more weight, move more freely and last longer than barrel, ball bearing or other types of hinges.

That's just the beginning of the advantages Guardian Hinges offers you. Our quiet, fully lubricated, friction-free hinges are also easy to install and mount. Plus, we offer a number of choices for material, finishes and styles.

Guardian Hinges are superior in every way, and to prove that, we back them with a limited lifetime warranty.

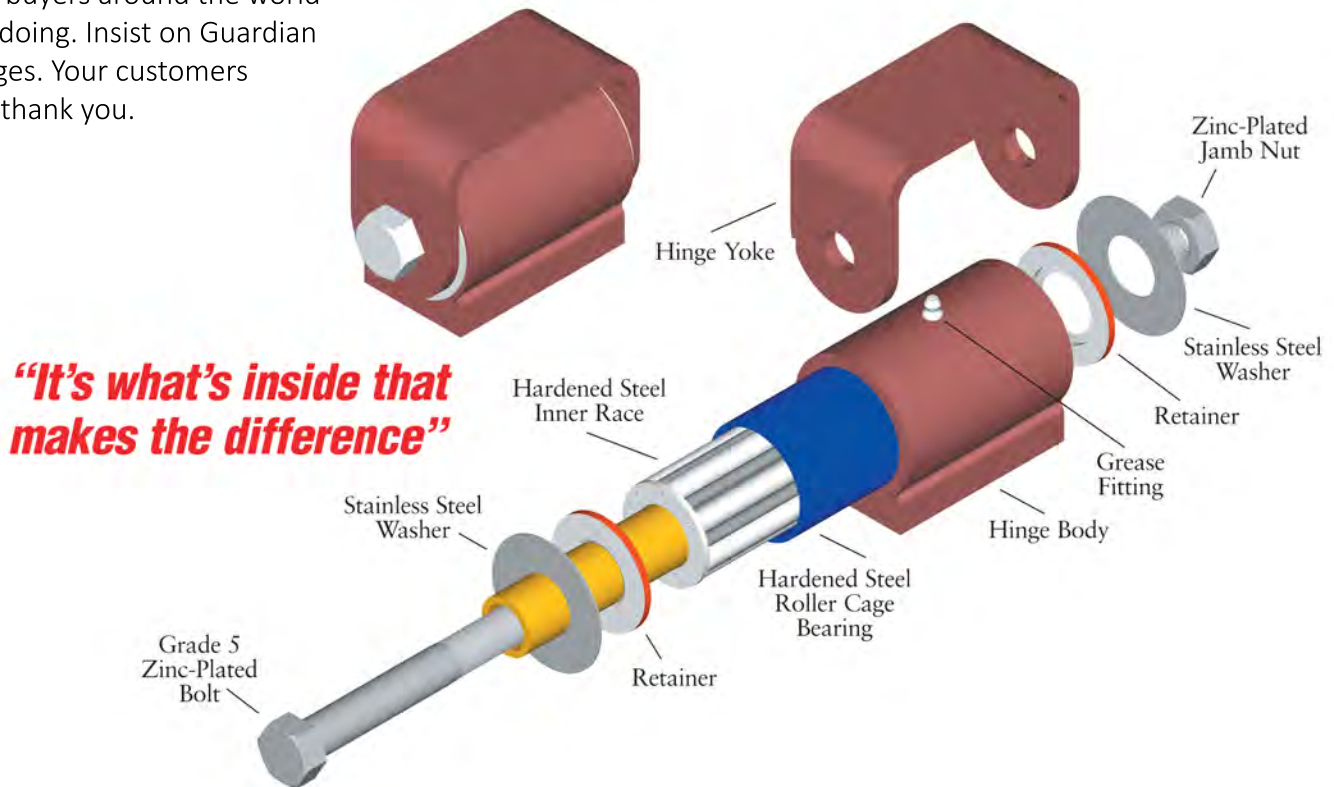
Do as so many installers, architects and buyers around the world are doing. Insist on Guardian Hinges. Your customers will thank you.

Strongest

- Weight capacity up to 3,000 lbs. per pair
- Five times the weight-bearing surface of the next comparable barrel hinge
- Largest weld surface in the industry

Most Durable

- Heavy Duty construction designed for maximum durability
- Dependable roller bearing design
- Even weight distribution
- Trouble-free operation
- Fully lubricated



Best Warranty in the Industry!



Table of Contents

Guardian Heavy Duty Hinges	Page 1
Guardian Standard Hinges	Page 2
Guardian Specialty Hinges	Page 3
Guardian Gorilla Hinges	Page 4
Guardian Gorilla Jr. Hinges	Page 4
Guardian Gorilla King Hinges	Page 5
Guardian Adjustable Hinges	Page 6
Guardian Uphill Hinges	Page 6
'V' Groove Wheels	Page 7
Wheels Covers	Page 7
Slide Latch / Drop Rod	Page 8
Bollards	Page 8
Guide Rollers / Gate Lift	Page 9
Accessories	Page 10
Warranty & Company Information	Page 11
Guardian Hinge Comparison Chart	Page 12



OUR Hinge. THEIR Gate. YOUR Reputation

2000 SERIES



The **GUARDIAN Heavy Duty Hinge Series** is designed for heavy or high-traffic gates, where reliability is required.

- All Steel Construction
- Rated 3000 lbs (1361 kgs) per pair
- Fully Lubricated
- Limited Lifetime Warranty



Flat Mount Both Sides

2000.100 - Prime Coated
2000.150 - Unfinished
2000.200 - Galvanized



Round Mount Both Sides

2010.100 - Prime Coated
2010.150 - Unfinished
2010.200 - Galvanized



Flat Mount to Gate Round Mount to Post

2015.100 - Prime Coated
2015.150 - Unfinished
2015.200 - Galvanized



Round Mount to Gate Flat Mount to Post

2020.100 - Prime Coated
2020.150 - Unfinished
2020.200 - Galvanized

**Prime
Coated**

Unfinished

Galvanized



Finishes are for illustration only



Flat Mount to Gate Bolt to Post

2025.100 - Prime Coated
2025.150 - Unfinished
2025.200 - Galvanized



Bolt to Gate Flat Mount to Post

2030.100 - Prime Coated
2030.150 - Unfinished
2030.200 - Galvanized



Bolt to Gate Round Mount to Post

2035.100 - Prime Coated
2035.150 - Unfinished
2035.200 - Galvanized



Round Mount to Gate Bolt to Post

2040.100 - Prime Coated
2040.150 - Unfinished
2040.200 - Galvanized



Bolt to Gate Bolt to Post

2050.100 - Prime Coated
2050.150 - Unfinished
2050.200 - Galvanized
2050.250 - Zinc Plated
2050.300 - Black Powder Coat

2100 SERIES



The **GUARDIAN Standard Hinge Series** is designed for heavy or high-traffic gates, where reliability is required.

- All Steel Construction
- Rated 1000 lbs (454 kgs) per pair
- Fully Lubricated
- Limited Lifetime Warranty



**Flat Mount
Both Sides**

2100.100 - Prime Coated
2100.150 - Unfinished
2100.200 - Galvanized



**Flat Mount to Gate
Bolt to Post**

2125.100 - Prime Coated
2125.150 - Unfinished
2125.200 - Galvanized



**Round Mount
Both Sides**

2110.100 - Prime Coated
2110.150 - Unfinished
2110.200 - Galvanized



**Bolt to Gate
Flat Mount to Post**

2130.100 - Prime Coated
2130.150 - Unfinished
2130.200 - Galvanized



**Flat Mount to Gate
Round Mount to Post**

2115.100 - Prime Coated
2115.150 - Unfinished
2115.200 - Galvanized



**Bolt to Gate
Round Mount to Post**

2135.100 - Prime Coated
2135.150 - Unfinished
2135.200 - Galvanized



**Round Mount to Gate
Flat Mount to Post**

2120.100 - Prime Coated
2120.150 - Unfinished
2120.200 - Galvanized



**Round Mount to Gate
Bolt to Post**

2140.100 - Prime Coated
2140.150 - Unfinished
2140.200 - Galvanized



**Bolt to Gate
Bolt to Post**

2150.100 - Prime Coated
2150.150 - Unfinished
2150.200 - Galvanized
2150.250 - Zinc Plated
2150.300 - Black Powder Coat

**Prime
Coated**

Unfinished

Galvanized



Finishes are for illustration only

OUR Hinge. THEIR Gate. YOUR Reputation

SPECIALTY



The **GUARDIAN Specialty Hinge Series** is designed for heavy or high-traffic gates, where reliability is required.

- Constructed of Aluminum, Stainless Steel or Combo
- Fully Lubricated
- Limited Lifetime Warranty



Flat Mount Both Sides

2165.100

GUARDIAN Standard Hinge, Aluminum
Rated to 600 lbs
(272 kgs) per pair



Aluminum - Flat Mount to Gate Steel - Bolt to Post

2173.100

GUARDIAN Standard Hinge, Aluminum/Steel
Rated to 600 lbs
(272 kgs) per pair



Bolt to Gate Bolt to Post

2168.100

GUARDIAN Standard Hinge, Aluminum
Rated to 600 lbs
(272 kgs) per pair



Flat Mount Both Sides

2180.100

GUARDIAN Standard Hinge, Stainless Steel
Rated to 1000 lbs
(454 kgs) per pair



Aluminum - Flat Mount to Gate Steel - Round Mount to Post

2170.100

GUARDIAN Standard Hinge, Aluminum/Steel
Rated to 600 lbs
(272 kgs) per pair



Bolt to Gate Bolt to Post

2185.100 -

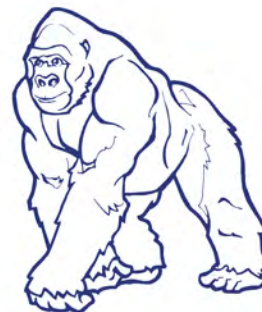
GUARDIAN Standard Hinge, Stainless Steel
Rated to 1000 lbs
(454 kgs) per pair

GORILLA



The **GORILLA Hinge Series** is designed for TOUGH jobs, where high security is required.

- Steel Construction
- Allows 180° Swing
- High Security Welded Pin Design
- Fully Lubricated
- Limited Lifetime Warranty



GORILLA Flat Mount Both Sides

2060.100 - Prime Coated
2060.150 - Unfinished
2060.200 - Galvanized



GORILLA Bolt to Gate Bolt to Post

2062.100 - Prime Coated
2062.150 - Unfinished



GORILLA Round Mount Both Sides

2064.100 - Prime Coated
2064.150 - Unfinished
2064.200 - Galvanized

GORILLA Hinges are rated 1000 lbs (454 kgs) per pair

GORILLA JR.

The **GORILLA JR Hinges** are great for your smaller access gate applications.



GORILLA JR. Flat Mount Both Sides

2070.100 - Prime Coated
2070.150 - Unfinished



GORILLA JR. Bolt to Gate Bolt to Post

2072.100 - Prime Coated
2072.150 - Unfinished

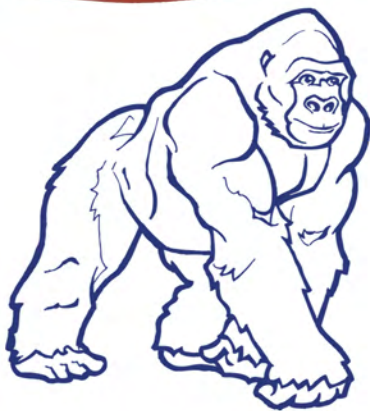


GORILLA Jr. Strap Bolt to Gate - Bolt to Post

2080.125 - Black Finish Paint
2080.150 - Unfinished
2080.300 - Black Powder Coat

GORILLA JR. Hinges are rated 250 lbs (114 kgs) per pair

OUR Hinge. THEIR Gate. YOUR Reputation



GORILLA KING

The **GUARDIAN Gorilla King Hinge** is built to reduce the space between the jamb/gate/post.

- Allows for 180° Swing
- High Security Welded Pin Design
- Hardened Roller Bearing Design
- Solid, Durable, Fully Lubricated
- Limited Lifetime Warranty

Anywhere you need a TOUGH hinge...

- Detention Facilities
- Prison Doors & Gates
- High Security Applications
- Trash Enclosures

You need a GORILLA HINGE

Flat Mount - Both Sides

2090.100 - Prime Coated
2090.150 - Unfinished
2090.200 - Galvanized

Bolt to Gate - Bolt to Post

2092.100 - Prime Coated
2092.150 - Unfinished
2092.200 - Galvanized

Round Mount - Both Sides

2094.100 - Prime Coated
2094.150 - Unfinished
2094.200 - Galvanized



GORILLA KING Hinges
are rated 3000 lbs
(1361 kgs) per pair



ADJUSTABLE HINGE

The **GUARDIAN Adjustable Hinge** is as dependable and reliable as our standard hinge with the advantage of adjustability.

- Easy to Adjust
- Fully Lubricated
- Limited Lifetime Warranty



Flat Mount - Both Sides

Adjusts from:
2 15/16" to 3 3/16"

3100.100 - Prime Coated
3100.150 - Unfinished
3100.200 - Galvanized



Round Mount - Both Sides

Adjusts from:
3 15/16" to 3 9/16"

3110.100 - Prime Coated
3110.150 - Unfinished
3110.200 - Galvanized



Bolt to Gate - Bolt to Post

Adjusts from:
3 7/16" to 3 11/16"

3150.100 - Prime Coated
3150.150 - Unfinished
3150.200 - Galvanized

Adjustable Hinges
are rated **1000 lbs**
(454 kgs) per pair



UPHILL HINGE

The **GUARDIAN Uphill Hinge** will allow a gate to swing uphill. These hinges are prime coated and sold in pairs.



2190.100 - Heavy Duty Hinge - Uphill

Rated to 2,000 lbs (907 kgs) per pair
Allows gate to swing uphill



2195.100 - Standard Hinge - Uphill

Rated to 600 lbs (272 kgs) per pair
Allows gate to swing uphill



OUR Hinge. THEIR Gate. YOUR Reputation

WHEELS



2205 Series Cast Iron "V" Groove Wheel

- Fits ½" Axle Size
- Cast Iron
- Roller Bearings

**Not recommended
for Commercial or
Industrial use**

2210 Series Precision Steel "V" Groove Wheel

- 2" Hub Length
- Chrome Finish
- ⅞" Wide "V" Groove
- 6205 Precision Ball Bearings
- Machined from Cold Rolled Steel



2205.400 - 4" Steel "V" Groove Wheel
with Axle, Nut & Bolt • 1½" Width
(Use 2215.400 Wheel Cover) Rated to 400 lbs (181 kgs)

2205.600 - 6" Steel "V" Groove Wheel
with Axle, Nut & Bolt • 2" Width
(Use 2215.600 Wheel Cover) Rated to 1000 lbs (454 kgs)



2210.400 - 4" Steel Precision "V" Groove Wheel
(Use 2220.400 Wheel Cover)
Rated to 3000 lbs (1361 kgs)

2210.600 - 6" Steel Precision "V" Groove Wheel
(Use 2220.600, 2222.600 or 2224.600 Wheel Cover)
Rated to 5000 lbs (2268 kgs)

WHEEL COVERS



2215.400

2215.400 - GUARDIAN 4" Steel Wheel Cover
(For "V" Groove Wheel 2205.400)

2215.600 - GUARDIAN 6" Steel Wheel Cover (Not Pictured)
(For "V" Groove Wheel 2205.600)

2220.400 - GUARDIAN 4" Steel Wheel Cover
(For Precision "V" Groove Wheel 2210.400)

2220.600 - GUARDIAN 6" Steel Wheel Cover (Not Pictured)
(For Precision "V" Groove Wheel 2210.600)



2220.600

2222.600 - GUARDIAN 6" Aluminum Wheel Cover
(For Precision "V" Groove Wheel 2210.600)

2226.600 - GUARDIAN 6" Trolley
Dual Wheel Cover
(For Precision "V" Groove
Wheel 2210.600)

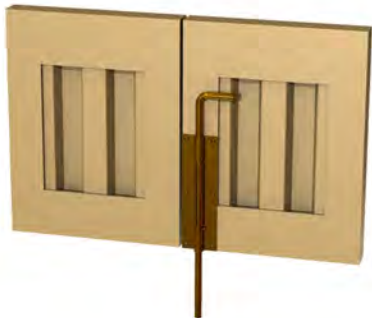


2226.600

SLIDE LATCH / DROP ROD



Slide Latch with Locking Capability - 4100.250



Drop Rod Locked in Place 4200.250

GUARDIAN Slide Gate Latch 4100.250

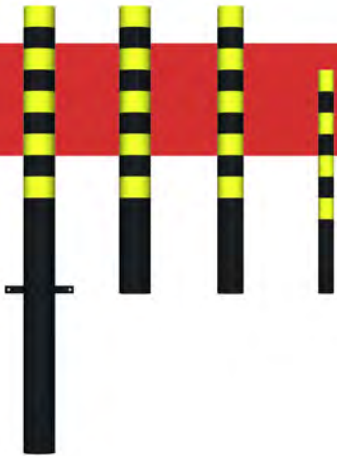
- Swing Gate Application
- Heavy Duty Steel Construction
- Easy to Install
- Zinc Plated Finish
- Bolt or Weld On
- Optional Drop Rod **4200.250**

GUARDIAN Slide Gate Latch with Drop Rod Assembly 4101.250

- Double Swing Gate Application
- Heavy Duty Steel Construction
- Easy to Install
- Zinc Plated Finish
- Bolt or Weld On
- Includes Drop Rod (**4200.250**)



**Drop Rod
4200.250**



BOLLARDS

GUARDIAN offers both permanent and removable bollards which are available in Prime Coated, Unfinished or Finished. Finished bollards are painted black with 4" Yellow Reflective Stripes for high visibility at night-time. All GUARDIAN bollards are made from schedule 40 pipe.

GUARDIAN Standard Bollards

2310 - Bollard 3" ID X 7' Std. Pipe

2311 - Bollard 5" ID X 7' Std. Pipe

2312 - Bollard 6" ID X 7' Std. Pipe

GUARDIAN Removable Bollards

2313 - Removable Bollard 3" ID X 5' Std. Pipe

2314 - Removable Bollard 5" ID X 7' Std. Pipe

2315 - Removable Bollard 6" ID X 7' Std. Pipe



OUR Hinge. THEIR Gate. YOUR Reputation



GUIDE ROLLERS

The **GUARDIAN Guide Roller Series** is designed for heavy or high-traffic gates, where reliability is required.

- Manufactured to meet or exceed UL325 requirements
- Steel housing Zinc Plated
- Commercial grade EPDM non-mar rubber roller
- Attractive self contained and easy to install systems



GUARDIAN 3" Guide Roller

2241.030

For Dual System-
2241.200 Bracket Required



GUARDIAN 6" Guide Roller

2241.060

For Dual System-
2241.200 Bracket Required



GUARDIAN 9" Guide Roller

2241.090

For Dual System-
2241.200 Bracket Required



GUARDIAN 12" Guide Roller

2241.120

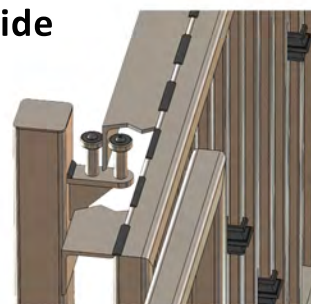
For Dual System-
2241.200 Bracket Required



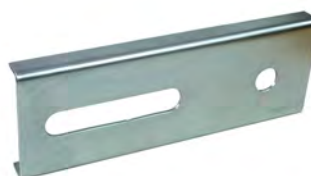
GUARDIAN Slide Gate Lift **2290.150**

- Adjustable Height
- Fully Assembled
- Easy to Use
- Unfinished
- 1 Year Warranty

Steel Slide Gate Guide **Roller Assembly** **2230.100**



Durable and reliable Slide Gate Guide easy to install- excellent for all types of roll gates especially those with irregular designs- installation instructions provided



Adjustable Guide **Roller Bracket** **(For Dual** **Roller System)** **2241.250**

- Adjustable from ½" to 3 ½"
- All Zinc Plated
- Weldable
- Rust Proof
- Maintenance Free

AUDIBLE STROBE



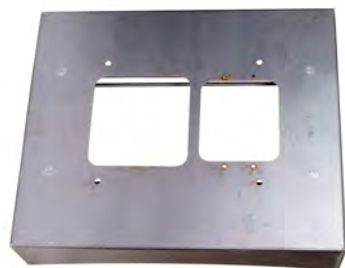
2270.100 – Safety Strobe with External Audible Alert

- UL325 – Class III or IV
- 12 Volt DC
- Mounts Directly to Operator or Post
- 14 Ga Steel Goose Neck (standard length 24")
- 75 db Sound Output
- 18 Gauge Electrical Cord Included

OPERATOR FORM PAD

Professionalize your Gate Operator installs with GUARDIAN Steel Forms

- Provides Stability
- Efficient for Operational Install
- Extremely Durable
- Saves Time and Money by Eliminating the need to Build Forms



2250.100

Universal Swing Gate Operator

28" x 24" x 4"

2260.100

Universal Slide Gate Operator

2260.400

Universal Barrier Operator



24" x 24" x 4"

OPERATOR LOCK BOX



2280.125 - Fits ELITE CSW 200

- Combination Lock - Adjustable
- Heavy Duty Construction
- Includes Torque Wrench
- Black Finish Paint

OUR Hinge. THEIR Gate. YOUR Reputation

Warranty & Company Information

Limited Lifetime Warranty

GUARDIAN GATE HARDWARE, LLC warrants that this hinge shall be free from all defects in materials and workmanship for the lifetime of the original gate it is installed on, by the original end user, under normal use and service, and when installed according to manufacturer specifications. GUARDIAN'S obligation under this warranty is specifically limited to repairing or replacing, at its option, any defective part during the warranty period. This warranty shall not apply to any part which has been altered, damaged, improperly installed or maintained, or repaired by any person not expressly authorized by GUARDIAN in writing to perform the repair. The warranty will not apply to parts which have been damaged by accident or improper use. There is no warranty of merchantability or fitness for any particular purpose nor is there any other warranty, expressed or implied, except as specifically stated above. GUARDIAN shall in no event be liable neither for incidental or consequential damages nor for any special damages of further loss, which may arise in connection with any claim. However, if GUARDIAN is held liable, whether directly or indirectly, for any loss or damage arising under this limited warranty or otherwise, regardless of the cause or origin, GUARDIAN'S maximum liability shall not in any case exceed the purchase price of the individual product or products which shall be the complete and exclusive remedy against GUARDIAN. This warranty gives the owner specific legal rights, and owner may have other rights, which vary from state to state. Some states do not allow limitations or exclusions or implied warranties for incidental or consequential damages so the foregoing limitations or exclusions may not apply.

Guardian Gate Hardware History

GUARDIAN GATE HARDWARE began manufacturing hinges and gate hardware in the mid 1980's. From its onset, the company earned an outstanding reputation for quality products that were well engineered. Our flagship product was the Guardian Hinge. Designed and engineered with unique qualities that carry the weight differently and more effectively than any other hinge on the market. The claim to fame was that it just didn't wear out and it worked marvelously even under severe conditions. What sets it apart is that our Model 2000 hinge has a weight bearing surface of almost five (5) times that of the closest competitive hinge. Plus, we offer the largest surface attachment to both the gate and the post or jamb which makes for better weight distribution. To top that, it is the only hinge on the market that has a full lubricated cavity that keeps our hardened roller bearing fully lubricated. That is why we offer our Limited Lifetime Warranty.

And, that is the reason it is now the most specified hinge for heavy duty gates by architects and engineers nationwide. For prisons, heavy gates in industry, education, government, military, businesses, apartments, private estates and community gates the Guardian Hinge is the hinge of choice when you want a quality gate system.

Why such an importance on hinges? Because, they are the foundation of a good gate system. If you have a automatic gate at a gated community with 150 residents, the average gate action per day will be around 8 times per home (more for an apartment) or 1200 times a day. That calculates to 438,000 times the gate will open and close in a year. Do the math on your gate system and then decide how important that hinge is. You better have a good hinge to handle that activity or you are just asking for problems. We want you to make an informed decision about your hinges and not use just a hinge that you will be replacing in short order. And, we also want you to know that you can have full trust and confidence in the Guardian Hinge. Absolutely Guaranteed Satisfaction.

We are so thankful and appreciative for the dealers and distributors who have recognized the quality of the Guardian Hinge and have made our products so successful. Thank you.

Guardian Hinge Comparison Chart

	Guardian	Barrel Hinge	King Kong	Pin Hinge	Power Hinge	Shut It
LIMITED LIFETIME WARRANTY	X					
FULLY LUBRICATED	X					
EVEN LOAD DISTRIBUTION	X					
LARGE WELD SURFACE AREA	X				X	
HARDENED ROLLER BEARING SYSTEM	X					
3000 LBS. LOAD LIMIT	X		X		X	X
LOW MAINTENANCE	X					
SINGLE UNIT	X					
HEAVY DUTY HINGE	X					
INDEPENDENTLY TESTED	X					
EASY TO INSTALL	X					
FULL 90° MOVEMENT	X				X	X
CAN MOVE 180° & UP TO 270°	X					
NATIONWIDE DISTRIBUTION	X	X	X	X	X	X
COMPETITIVE PRICING	X					
OVER 40 DIFFERENT STYLES	X					
ALUMINUM	X				X	
STAINLESS STEEL	X					



OUR Hinge. THEIR Gate. YOUR Reputation



OUR Hinge. THEIR Gate. YOUR Reputation.

“Hands down, Guardian Gate Hardware sells one of the best “sealed bearing hinges” I’ve ever used which makes my job a whole lot easier!”

- **Kenny Pride**
Automation Pride
Palm Desert, California

“We sell Hinges, that is our niche. We have yet to find a better made product than those hinges we buy from Guardian Gate. In all the years we have been selling Guardian hinges we have yet to hear of one single complaint or failure. Guardian hinges are simply the best!”

- **Bill Haynsworth**
San Diego Hardware Co.
San Diego, California

“I’ve been a service tech 18 years and I’ve seen a lot of hinges. I tell my customers it’s time for real hinges now. We go Guardian. My customers are amazed.”

- **David Saucedo**
Alpha Entry Systems
Rio Grande Valley, Texas

“A gate system is only as good as its hardware and when it comes to hinges, GUARDIAN’S design and quality is unsurpassed.”

- **Steve Shain**
Southwest Automated Security
Phoenix, Arizona

“The GUARDIAN hinge is the best hinge value on the market. There are a lot of copies, but I haven’t found any that are nearly as strong and dependable in the long run.”

- **Mike Thurber**
Southgate Fence
Olympia, Washington

“We have been using Guardian hinges since 2006. We use them because once installed, we don’t have to go back. We all know how going back to a job is costly and time consuming. I would rather not have to deal with those types of issues. These hinges are bullet (I mean fencer) proof lol. Thanks for a great product.”

- **John Buehler, Vice President**
Buffalo Fence & Barn Company
Flagstaff, Arizona

“GUARDIAN has always provided excellent customer service and supplies a quality product in a timely manner.”

- **Dale Goebel**
Mac Industries
Dalton Gardens, Idaho

“We have been using GUARDIAN hinges for years. The design and durability of the hinges provide an aesthetically pleasing look while reducing the installation time of our gate systems. The hinges are backed by an excellent sales and service staff.”

- **Christopher Lambi**
Amity Fence Corporation
Reading, Pennsylvania

“Dura Fence Co. has been using GUARDIAN Roller Bearing Hinges since 1992. Our fence company manufactures quality products and relies on the durability and quality of the Guardian Gate Hardware products.”

- **Miguel A. Simunic**
Dura Fence Co.
Sacramento, California

Distributed by:

www.allgatehardware.com

(520) 780-9751

sales@allgatehardware.com

Tucson, Arizona USA